

REGULATORY ENVIRONMENT ON ELECTRICAL AND ELECTRONIC PRODUCTS IN MALAYSIA

Table of Contents

- I. Rationale for Regulation
- II. Regulatory Authority
- III. Legislative Framework
- IV. Mandatory Standards
- V. Mode of Regulation and Types of Conformity Assessment Regimes
- VI. Flow chart of each Member Country's Regime
- VII. Voltage, Frequency and Mains Plug Configuration
- VIII. Other Information
- IX. Contact Person

I. RATIONALE FOR REGULATION

COUNTRY	RATIONALE FOR REGULATION
Malaysia	Ensure safety and consumer protection.

II. REGULATION BODY

COUNTRY	REGULATORY BODY
Malaysia	Energy Commission (Suruhanjaya Tenaga)

III. LEGISLATIVE FRAMEWORK

COUNTRY	LEGISLATIVE FRAMEWORK
Malaysia	<ul style="list-style-type: none">• Electricity Supply Act 1990; and• Electricity Regulations 1994.• Electricity (Amendment) Regulations 2013.

IV. MANDATORY STANDARDS

Country	Total Product	Product type or grouping	STANDARDS					
			Domestic Standards	Please tick box if mandatory	Relevant International Standards	Extent of Alignment	State reason if MOD	Indicate whether requires: Safety (S), Environment (E) EMC, or combination
Malaysia	1	PLUG TOP/PLUG(15A and below)						
		Flat Non-Rewirable Two Pole Plug with supply cord (max.2.5A)	MS1578:2003	✓	BSEN 50075:1991	-		S
		13A Fused Plug	MS589-1:2011	✓	BS1363:PT.1:1995+A1,A2,A3	-		S
		15A Plug	MS1577:2003	✓	No corresponding international standard	-		S
		Appliance Coupler	MSIEC60320-1:2010	✓	IEC60320-1:2007	IDT		S
		Interconnection Coupler	MSIEC60320-1:2010 MSIEC60320-2-2:2011	✓ ✓	IEC60320-1:2007 IEC60320-2-2:1998	IDT IDT		S
		Adaptor (Multiways)	MS589PT.3:2018	✓	BS1363PT.3:1995+A1,A2+A3	-		S
		Integrated Adaptor	MS1144:2017	✓	BS5733:2010+A1 2014	-		S
		Travel adaptor	No corresponding MS		IEC60884-1:2006 IEC60884-2-5:1995	IDT		S
		Electrical Connector (connecting device)	MSIEC60998-1:2005	✓	IEC60998-1:2002	IDT		S

Country	Total Product	Product type or grouping	STANDARDS					
			Domestic Standards	Please tick box if mandatory	Relevant International Standards	Extent of Alignment	State reason if MOD	Indicate whether requires: Safety (S), Environment (E) EMC, or combination
		Connecting device with screw type clamping unit	MSIEC60998-1:2005 MSIEC60998-2-1:2005	✓ ✓	IEC60998-1:2002 IEC60998-2-1:2002	IDT IDT		S
		Connecting device with screw-less type clamping unit	MSIEC60998-1:2005 MSIEC60998-2-2:2005	✓ ✓	IEC60998-1:2002 IEC60998-2-2:2005	IDT IDT		S
		Connecting device with insulation-piercing clamping units	MSIEC60998-1:2005 MSIEC60998-2-3:2005	✓ ✓	IEC60998-1:2002 IEC60998-2-3:2002	IDT IDT		S
		Twist-on connecting device	MSIEC60998-1:2005 MSIEC60998-2-4:2005	✓ ✓	IEC60998-1:2002 IEC60998-2-4:2002	IDT IDT		S
		Connecting boxes	MS 1873:2005 MS 1873-22:2006	✓ ✓	IEC 60670-1:2002 IEC 60670-22:2002	IDT IDT		S

Country	Total Product	Product type or grouping	STANDARDS					
			Domestic Standards	Please tick box if mandatory	Relevant International Standards	Extent of Alignment	State reason if MOD	Indicate whether requires: Safety (S), Environment (E) EMC, or combination
	2	SWITCHES AND DIMMERS						
		General purpose Switch	MSIEC60669-1:2012	✓	IEC60669-1:2007	IDT		S
		Door Bell & Chime	MS IEC 61558-1:2005 MS IEC 61558-2-8:2007		IEC 61558-1:2009 IEC 61558-2-8:2010			
		Electronic Switch	MSIEC60669-1:2012 MSIEC60669-2-1:2012	✓ ✓	IEC60669-1:2007 IEC60669-2-1:2009	IDT		S
		Remote-control Switch	MSIEC60669-1:2012 MSIEC60669-2-2:2012	✓ ✓	IEC60669-1:2007 IEC60669-2-2:2006	IDT		S
		Time Delay Switch	MSIEC60669-1:2012 MSIEC60669-2-3:2012	✓ ✓	IEC60669-1:2007 IEC60669-2-3:2006	IDT		S
		Cooker Control Unit	No corresponding MS	✓	BS4177:1992	-		S

Country	Total Product	Product type or grouping	STANDARDS					
			Domestic Standards	Please tick box if mandatory	Relevant International Standards	Extent of Alignment	State reason if MOD	Indicate whether requires: Safety (S), Environment (E) EMC, or combination
	3	SOCKET OUTLES(15A and below)						
		Electric Shaver Socket Outlets	MSIEC61558-1:2005 MSIEC61558-2-5:2005	✓	IEC61558-1:2009 IEC61558-2-5:2010	IDT IDT		S
		13ASwitch& Unswitch socket outlet	MS589:PT.2:2018	✓	BS1363:PT2: 1995+A1,A2,A3	-		S
		15Asocket outlet & Plug	MS1577:2003	✓	No corresponding international standard	-		S
		Portable2pin socket outlet class II	MS1579:2003		No corresponding international standard	-		S
		Portable cable reel	MS1141:2006	✓	IEC 61242:2008 with modification	-		S

Country	Total Product	Product type or grouping	STANDARDS					
			Domestic Standards	Please tick box if mandatory	Relevant International Standards	Extent of Alignment	State reason if MOD	Indicate whether requires: Safety (S), Environment (E) EMC, or combination
	4	FLUORESCENT LAMP HOLDERS/STARTER HOLDER						
		Lamp holders for tubular fluorescent lamps	MSIEC60400:2006	✓	IEC60400:2004	IDT		S
		Stater holders for tubular fluorescent lamps	MSIEC60400:2006	✓	IEC60400:2004	IDT		S
	5	CEILING ROSES						
		Ceiling roses	MS770:1982	✓	BS67:1969	-		S
		Edison Screw Lamp holder	MSIEC60238:2008	✓	IEC60238:2004	IDT		S
	6	BAYONET CAPS AND MULTIWAYS ADAPTORS						
		-Bayonet Lamp holders	No corresponding MS	✓	IEC61184:2008+A1	-		S

Country	Total Product	Product type or grouping	STANDARDS					
			Domestic Standards	Please tick box if mandatory	Relevant International Standards	Extent of Alignment	State reason if MOD	Indicate whether requires: Safety (S), Environment (E) EMC, or combination
		-Bayonet Adaptors	MS769:1982 with IEC 61184:2008	✓	IEC61184:2008 with modification	-		S
	7	LAMPS FITTING						
		-Fixed general purpose luminaries (Excluding Tube/Bulb) -Batten Luminaries (excluding Tube/Bulb), -Luminaries with self-ballasted florescent lamp.	MSIEC60598-1:2012 MSIEC60598-2-1:1997	✓ ✓	IEC60598-1:2008 IEC60598-2-1:1979	IDT IDT		S
		Recessed Luminaries (excluding Tube/Bulb)	MSIEC60598-1:2012 MSIEC60598-2-2:1998	✓ ✓	IEC60598-1:2008 IEC60598-2-2:1997	IDT IDT		S

Country	Total Product	Product type or grouping	STANDARDS					
			Domestic Standards	Please tick box if mandatory	Relevant International Standards	Extent of Alignment	State reason if MOD	Indicate whether requires: Safety (S), Environment (E) EMC, or combination
		Glow-starters for tubular fluorescent	MSIEC60155:1996	✓	IEC60155:2006	IDT		S
		Self-ballasted Compact Florescent Lamp (CFL)with Edison screw or bayonet caps	MSIEC60968:2006 MSIEC60969:2006 (performance)	✓ ✓	IEC60968:1999 IEC60969:2001	IDT IDT		S & E
		Lamp controlgear: Particular requirements for d.c or a.c supplied electronic controlgear for LEDmodules	MSIEC61347-1:2012 MSIEC61347-2-13:2012(P)	✓ ✓	IEC61347-1:2010 IEC61347-2-13:2006	IDT IDT		S
		LED Lampholder (Connectors for LED-modules)	MSIEC60838-1:2008 MSIEC60838-2-2:2008	✓ ✓	IEC60838-1:2004 IEC60838-2-2:2006	IDT IDT		S

Country	Total Product	Product type or grouping	STANDARDS					
			Domestic Standards	Please tick box if mandatory	Relevant International Standards	Extent of Alignment	State reason if MOD	Indicate whether requires: Safety (S), Environment (E) EMC, or combination
		Self ballasted LED Modules for general lighting services by voltage >50V	MSIEC62031:2011with MSIEC60061-1:2005	✓ ✓	IEC62031:2008+A1,A2 with IEC60061-1:2005	IDT IDT		S & E
		Self ballasted double capped LED lamps for general lighting services by voltage >50V (to retrofit linear fluorescent lamp)	MSIEC62776:2017	✓	IEC62776:2014	IDT		S & E
		Self-ballasted single capped LED-lamps for general lighting services by voltage>50V	MSIEC62560:2012	✓	IEC62560:2011	IDT		S & E
	8	CAPACITORS FOR FLUORESCENT LAMPS						

Country	Total Product	Product type or grouping	STANDARDS					
			Domestic Standards	Please tick box if mandatory	Relevant International Standards	Extent of Alignment	State reason if MOD	Indicate whether requires: Safety (S), Environment (E) EMC, or combination
		Capacitors for use in tubular fluorescent lamps and other circuits circuit	MSIEC61048:2006 MSIEC61049:1999	✓	IEC61048:2006 IEC61049:1991	IDT		S
	9	BALLAST/ CONTROLGEAR/DRIVERFORLAMP						
		Magnetic Ballast for tabular fluorescent lamp	MSIEC61347-1:2012 MSIEC61347-2-8:2003 MS 141:2014 with MS IEC 60921:2013	✓ ✓ ✓ ✓	IEC61347-1:2010 IEC61347-2-8:2000 IEC60921:2006 with modification	IDT IDT MOD MOD	Additional ballast lost requirement	S
		Electronic Ballast for fluorescent lamp	MSIEC61347-1:2012 MSIEC61347-2-3:2003 MSIEC60929:2008 with MSIEC61000-3-2:2014	✓ ✓ ✓ ✓	IEC61347-1:2010 IEC61347-2-3:2000 IEC60929:2006 with IEC61000-3-2:2009	IDT IDT IDT IDT		S
		Control Gear	MSIEC61347-1:2012	✓	IEC61347-1:2010	IDT		S
	10	CIRCUIT BREAKER including AC CURRENT OPERATED EARTH LEAKAGE CIRCUIT BREAKER and MINIATURE CIRCUIT BREAKER						

Country	Total Product	Product type or grouping	STANDARDS					
			Domestic Standards	Please tick box if mandatory	Relevant International Standards	Extent of Alignment	State reason if MOD	Indicate whether requires: Safety (S), Environment (E) EMC, or combination
		Residual Current Circuit Breaker (RCCB)	MSIEC61008-1:2012 MSIEC61008-2-1:2003 Or MSIEC61008-1:2012 MSIEC61008-2-2:2003	✓ ✓ ✓	IEC61008-1:2010 IEC61008-2-1:1990 or IEC61008-1:2010 IEC61008-2-2:1990	IDT IDT IDT		S
		Residual Current Breaker with Overcurrent Protection (RCBO)	MSIEC61009-1:2012 MSIEC61009-2-1:2003 or MSIEC61009-1:2012 MSIEC61009-2-2:2003	✓ ✓ ✓	IEC61009-1:2010 IEC61009-2-1:1991 or IEC61009-1:2010 IEC61009-2-2:1991	IDT IDT IDT		S
		Miniature Circuit Breaker (MCB)for ac	MSIEC60898-1:2007	✓	IEC60898-1:2003	IDT		S
		Miniature Circuit Breaker (MCB)for ac & dc	MSIEC60898-2:2007	✓	IEC60898-2:2003	IDT		S
		Fuse Base & Carrier up to 32A	MSIEC60269-1:2011 MSIEC60296-2:2011	✓ ✓	IEC60269-1:2006 IEC60269-2:2006	IDT IDT		S
		Fuse/Fuse Link up to 63A	MSIEC60269-2:2011 MSIEC60269-3:2011	✓ ✓	IEC60269-2:2006 IEC60269-3:2010	IDT IDT		S

Country	Total Product	Product type or grouping	STANDARDS					
			Domestic Standards	Please tick box if mandatory	Relevant International Standards	Extent of Alignment	State reason if MOD	Indicate whether requires: Safety (S), Environment (E) EMC, or combination
		Switch fuse up to 63A.	MSIEC60947-1:2010 MSIEC60947-3:2010	✓ ✓	IEC60947-1:2007 IEC60947-3:2008	IDT IDT		S
	11	PORTABLE LUMINAIRE LAMP						
		-Standing Lamp with detachable Or non-detachable mains supply flexible cord, -Standing lamp & adaptor, -Table lamp & adaptor,	MSIEC60598-1:2012 MSIEC60598-2-4:2003	✓ ✓	IEC60598-1:2008 IEC60598-2-4:1997	IDT IDT		S
		-Night Lamp integral with Direct in plug. -Portable LED Lamp	MS IEC 60598-1:2012 MS IEC 60598-2-12:2010	✓ ✓	IEC 60598-1:2008 IEC 60598-2-12:2006	IDT IDT		S

Country	Total Product	Product type or grouping	STANDARDS					
			Domestic Standards	Please tick box if mandatory	Relevant International Standards	Extent of Alignment	State reason if MOD	Indicate whether requires: Safety (S), Environment (E) EMC, or combination
		Hand Lamp & adaptor,	MSIEC60598-1:2012 MSIEC60598-2-8:2006	✓ ✓	IEC60598-1:2008 IEC60598-2-8:2007	IDT IDT		S
	12	KETTLE including HEATING ELEMENTS IF SUPPLIED SEPARATELY						
		Warming Plate	MSIEC60335-1:2015 MSIEC60335-2-12:2014	✓ ✓	IEC60335-1:2010 IEC60335-2-12:2008	IDT IDT		S
		Deep Fryer	MSIEC60335-1:2015 MSIEC60335-2-13:2017	✓ ✓	IEC60335-1:2010 IEC60335-2-13:2009	IDT IDT		S
		Heating Liquids such as: Coffee/Tea Maker, Food Steamer, Egg Boiler, Jug, Slow Cooker, Steamboat, Kettle, Airpot, Bottle Warmer, Sterillizer.	MSIEC60335-1:2015 MSIEC60335-2-15:2017	✓ ✓	IEC60335-1:2006 IEC60335-2-15:2012	IDT IDT		S

Country	Total Product	Product type or grouping	STANDARDS					
			Domestic Standards	Please tick box if mandatory	Relevant International Standards	Extent of Alignment	State reason if MOD	Indicate whether requires: Safety (S), Environment (E) EMC, or combination
		Multi-purpose cooker	MSIEC60335-1:2015 MSIEC60335-2-9:2014 MSIEC60335-2-13:2006 MSIEC60335-2-15:2004	✓ ✓ ✓ ✓	IEC60335-1:2010 IEC60335-2-9:2008 IEC60335-2-13:2004 IEC60335-2-15:2002	IDT IDT IDT IDT		S
		Water Dispenser/Filter /Ionizer/ Hydrogen	MSIEC60335-1:2015	✓	IEC60335-1:2010	IDT		S
		Water Dispenser -Hot	MSIEC60335-1:2015 MSIEC60335-2-15:2004	✓ ✓	IEC60335-1:2010 IEC60335-2-15:2002	IDT IDT		S
		Water Dispenser -Cold	MSIEC60335-1:2015 MSIEC60335-2-24:2005	✓ ✓	IEC60335-1:2010 IEC60335-2-24:2010	IDT IDT		S
		Water Dispenser –Hot and Cold (if the hot water boils)	MSIEC60335-1:2015 MS1597-2-24:2005 MSIEC60335-2-15:2004	✓ ✓ ✓	IEC60335-1:2010 IEC60335-2-15:2002 IEC60335-2-24:2005	IDT IDT IDT		S
		Water Dispenser –Hot and Cold (if the hot water does not boils)	MSIEC60335-1:2015 MSIEC60335-2-24:2005 MS 1597-2-21:2015	✓ ✓ ✓	IEC60335-1:2010 IEC60335-2-24:2002 IEC60335-2-21:2012 with mod.	IDT IDT IDT		S
		Water Dispenser –Hot and Cold (if the water heater is instantaneous)	MSIEC60335-1:2015 MS1597-2-24:2005 MS 1597-2-35:2010	✓ ✓ ✓	IEC60335-1:2010 IEC60335-2-24:2002 IEC60335-2-35:2006 with mod.	IDT IDT IDT		S

Country	Total Product	Product type or grouping	STANDARDS					
			Domestic Standards	Please tick box if mandatory	Relevant International Standards	Extent of Alignment	State reason if MOD	Indicate whether requires: Safety (S), Environment (E) EMC, or combination
	13	KITCHEN MACHINE						
		Blender, Chopper, Food Processor, Juice Extractor, Grinder, Mixer.	MSIEC60335-1:2015 MSIEC60335-2-14:2014	✓ ✓	IEC60335-1:2010 IEC60335-2-14:2008	IDT IDT		S
	14	TOASTER/ OVEN (Cooking Appliance)						
		Stationary Electric Oven, Induction Hob.	MSIEC60335-1:2015 MSIEC60335-2-6:2014	✓ ✓ ✓ ✓	IEC60335-1:2010 IEC60335-2-6:2008	IDT IDT IDT MOD	Cl.3.1.9.102-water temperature changed to 25°C±5°C	S
		Bread Maker, Bread Toaster, Portable Oven, Induction Cooker, Grill, Sandwich Maker/Waffle Maker, Roaster.	MSIEC60335-1:2015 MSIEC60335-2-9:2014	✓ ✓	IEC60335-1:2010 IEC60335-2-9:2008	IDT IDT		S

Country	Total Product	Product type or grouping	STANDARDS					
			Domestic Standards	Please tick box if mandatory	Relevant International Standards	Extent of Alignment	State reason if MOD	Indicate whether requires: Safety (S), Environment (E) EMC, or combination
		Microwave Oven	MSIEC60335-1:2015 MSIEC60335-2-25:2014	✓ ✓	IEC60335-1:2010 IEC60335-2-25:2010	IDT IDT		S
	15	RICE COOKER						
		Rice Cooker	MSIEC60335-1:2015 MSIEC60335-2-15:2004	✓ ✓	IEC60335-1:2010 IEC60335-2-15:2002	IDT IDT		S
	16	REFRIGERATOR						
		Refrigerator, Freezer, Minibar.	MSIEC60335-1:2015 MS 1597-part 2-24:2005	✓ ✓	IEC60335-1:2010 IEC60335-2-24:2005 with modification	IDT IDT MOD	Cl.3.2.9.102-3.2.9.104 and Cl.5.7 –water temperature changed to 25°C±5°C	S & E
	17	IMMERSION WATER HEATER						
		Fixed Immersion Heater	MSIEC60335-1:2015 MSIEC60335-2-73:2014	✓ ✓	IEC60335-1:2010 IEC60335-2-73:2009	IDT IDT		S
		Portable Immersion Heater	MSIEC60335-1:2015 MSIEC60335-2-74:2010	✓ ✓	IEC60335-1:2010 IEC60335-2-74:2006	IDT IDT		S

Country	Total Product	Product type or grouping	STANDARDS					
			Domestic Standards	Please tick box if mandatory	Relevant International Standards	Extent of Alignment	State reason if MOD	Indicate whether requires: Safety (S), Environment (E) EMC, or combination
	18	WATER HEATER including HEATING ELEMENTS IF SUPPLIED SEPARATELY						
		Storage Water Heater	MSIEC60335-1:2015 MS1597-2-21:2015	✓ ✓	IEC60335-1:2010 IEC60335-2-21:2012 with modification	IDT MOD	Cl.5.7 –Additional water having temperature of 30°C±3°C	S
		Instantaneous Water Heater	MSIEC60335-1:2015 MS1597-2-35:2010	✓ ✓	IEC60335-1:2010 IEC60335-2-35:2006with modification	IDT MOD	Cl.3 –Change water temperature to 30°C±3°C	S
	19	WASHING MACHINE						
		Washing Machine with dryer	MSIEC60335-1:2015 MS1597:Part2-7:2007	✓ ✓	IEC60335-1:2010 IEC60335-2-7:2006	IDT MOD	Cl.3.1.9and Cl.6.2 of Annex BB–water temperature at inlets intended for	S
		Washing Machine with separate spin container	MSIEC60335-1:2015 MSIEC60335-2-4:2007 MS 1597:Part 2-7:2017	✓ ✓ ✓	IEC60335-1:2010 IEC60335-2-4:2004 IEC 60335-2-7:2012 with modification	IDT IDT MOD		S
		Tumbler Dryers	MSIEC60335-1:2015 MSIEC60335-2-11:2014	✓ ✓	IEC60335-1:2010 IEC60335-2-11:2012	IDT IDT		S
		Cloth Dryers (on rack located)	MSIEC60335-1:2015 MS IEC 60335-2-43:2014	✓ ✓	IEC60335-1:2010 IEC60335-2-43:2008	IDT MOD	Cl.3.1.9. –water temperature changed to 25°C±5°C	

Country	Total Product	Product type or grouping	STANDARDS					Indicate whether requires: Safety (S), Environment (E) EMC, or combination
			Domestic Standards	Please tick box if mandatory	Relevant International Standards	Extent of Alignment	State reason if MOD	
		Dishwasher and other utensils.	MSIEC60335-1:2015 MS1597:Part2-5:2005	✓ ✓	IEC60335-1:2010 IEC60335-2-5:2005 with mod	IDT MOD	Cl.3.1.9and Cl.6.2 of Annex BB–water temperature at inlets intended for cold water changed	
	20	FAN						
		Moving-louver fan, Ceiling fan, Auto fan, Pedestal fan, Table fan, Wall fan& Applies to their separate regulators and with blade.	MSIEC60335-1:2015 MS1597:Part2-80:2010 MS1220:2010	✓ ✓ ✓	IEC60335-1:2010 IEC60335-2-80:2008 with modification for ceiling fan only IEC60879:1986 with modification	IDT MOD MOD	<u>MS1597:P2:</u> Cl.7.12.1,Cl.21.102 andcl.21.103 New requirement for detachable part, temperature marking, maintenance instruction, moisture resistance, supply	

Country	Total Product	Product type or grouping	STANDARDS					
			Domestic Standards	Please tick box if mandatory	Relevant International Standards	Extent of Alignment	State reason if MOD	Indicate whether requires: Safety (S), Environment (E) EMC, or combination
		Ventilating fan, Decorative fan & Applies to their separate regulators and fan without blade.	MSIEC60335-1:2015 MS1597:Part2-80:2010	✓ ✓	IEC60335-1:2010 IEC60335-2-80:2008 with modification for ceiling fan only	IDT MOD MOD	connection, external flexible cord and mechanical strength MS1220: 1) Cl7.2: statement 'with at least five running positions' is replaced by 'with at least three running positions' 2) Cl10.3.2: Rating of frequency is defined to suit local conditions	
		Range Hood	MSIEC60335-1:2015 MSIEC60335-2-31:2014	✓ ✓	IEC60335-1:2010 IEC60335-2-31:2008	IDT IDT		
		Cleaning Appliances (eg. Air Purifier)	MSIEC60335-1:2015 MSIEC60335-2-65:2014	✓ ✓	IEC60335-1:2010 IEC60335-2-65:2008	IDT IDT		
		Humidifiers (eg. Air Cooler)	MSIEC60335-1:2015 MSIEC60335-2-98:2014	✓ ✓	IEC60335-1:2010 IEC60335-2-98:2008	IDT IDT		

Country	Total Product	Product type or grouping	STANDARDS					
			Domestic Standards	Please tick box if mandatory	Relevant International Standards	Extent of Alignment	State reason if MOD	Indicate whether requires: Safety (S), Environment (E) EMC, or combination
	21	HAND OPERATED HAIR DRYER/HAIRCARE/SKIN CARE						
		Hair Dryer, Hair Styling Set, Ionic Facial Steamer or similar to it.	MSIEC60335-1:2015 MSIEC60335-2-23:2007	✓ ✓	IEC60335-1:2010 IEC60335-2-23:2003	IDT IDT		
	22	IRON						
		Iron	MSIEC60335-1:2015 MSIEC60335-2-3:2006	✓ ✓	IEC60335-1:2010 IEC60335-2-3:2004	IDT IDT		
		Fabric Steamer / Garment Steamer	MSIEC60335-1:2015 MSIEC60335-2-85:2014	✓ ✓	IEC60335-1:2010 IEC60335-2-85:2008	IDT IDT		
	23	SHAVER						
		Shaver, Hair Clippers.	MSIEC60335-1:2015 MSIEC60335-2-8:2002	✓ ✓	IEC60335-1:2010 IEC60335-2-8:1992+A1	IDT IDT		
	24	VAPORISER						
		Mosquito Matt Vapor, Aroma Vapor (Air Freshener)	MSIEC60335-1:2015 MSIEC60335-2-101:2014	✓ ✓	IEC60335-1:2010 IEC60335-2-101:2008	IDT IDT		

Country	Total Product	Product type or grouping	STANDARDS					
			Domestic Standards	Please tick box if mandatory	Relevant International Standards	Extent of Alignment	State reason if MOD	Indicate whether requires: Safety (S), Environment (E) EMC, or combination
	25	VACUUM CLEANER						
		Vacuum Cleaner, Water Suction Cleaning.	MSIEC60335-1:2015 MSIEC60335-2-2:2006	✓ ✓	IEC60335-1:2010 IEC60335-2-2:2004	IDT IDT		
	26	HI-FIDELITY SET						
		Sub-woofer, Amplifier, Cassette Player, Equalizer/ Mixer, Hi-Fi System, Karaoke, PA System, Portable Hi-Fi System, Portable Radio Cassette, Player/ Recorder, Radio, Radio Alarm, Tuner/ Receiver, Turntables/ Record Players, Compact Disc Player	MSIEC60065:2007	✓	IEC60065:2005 Or IEC 62368-1:2014	IDT		

Country	Total Product	Product type or grouping	STANDARDS					
			Domestic Standards	Please tick box if mandatory	Relevant International Standards	Extent of Alignment	State reason if MOD	Indicate whether requires: Safety (S), Environment (E) EMC, or combination
	27	VIDEO and VISUAL DISPLAY UNIT						
		Electronic appliances such as: LCD,	MSIEC60065:2007	✓	IEC60065:2005 Or IEC 62368-1:2014	IDT		
	28	AUDIO and VIDEO PLAYER UNIT						
		VCD, Laser Disc, Video Cassette Recorder,	MSIEC60065:2007	✓	IEC60065:2005 Or IEC 62368-1:2014	IDT		
	29	MASSAGER						
		Foot Massagers, Massage Bed, Massage Chair, Massage Pads,	MSIEC60335-1:2015 MSIEC60335-2-32:2014	✓ ✓	IEC60335-1:2010 IEC60335-2-32:2008	IDT IDT		
	30	AIR CONDITIONER						
		Split Air-conditioner, Portable Air-conditioner, Ceiling Air-conditioner (Cooling Capacity of 32,000Btu/hr& below)	MSIEC60335-1:2015 MS1597-2-40:2017	✓	IEC60335-1:2010 IEC60335-2-40:2013 with modification	IDT MOD	-	

Country	Total Product	Product type or grouping	STANDARDS					
			Domestic Standards	Please tick box if mandatory	Relevant International Standards	Extent of Alignment	State reason if MOD	Indicate whether requires: Safety (S), Environment (E) EMC, or combination
	31	CHRISTMAS LIGHT						
		Lighting Chain, Rope Light, Decorative/ Festive	MSIEC60598-1:2012 MSIEC60598-2-20:2013	✓ ✓	IEC60598-1:2008 IEC60598-2-20:2010	IDT IDT		
	32	DOMESTIC POWER TOOLS(Portable Type)						
		Drill (Drill bit size up to 15 mm)	MSIEC60745-1:2010 MSIEC60745-2-1:2011	✓ ✓	IEC60745-1:2006 IEC60745-2-1:2003+A1	IDT IDT		
		Grinder (up to 100mm)	MSIEC60745-1:2010 MSIEC60745-2-3:2010	✓ ✓	IEC60745-1:2006 IEC60745-2-3:2006	IDT IDT		
		Sander (up to 300W)	MSIEC60745-1:2010 MSIEC60745-2-4:2011	✓ ✓	IEC60745-1:2006 IEC60745-2-4:2002+A1	IDT IDT		
		Circular Saw and circular knife (Cutting Blade upto 160mm)	MSIEC60745-1:2010 MSIEC60745-2-5:2010	✓ ✓	IEC60745-1:2006 IEC60745-2-5:2006	IDT IDT		
		Spray gun for non-flammable liquid (up to 100 bars)	MSIEC60745-1:2010 MSIEC60745-2-7:2005	✓ ✓	IEC60745-1:2006 IEC60745-2-7:1989	IDT IDT		

Country	Total Product	Product type or grouping	STANDARDS					
			Domestic Standards	Please tick box if mandatory	Relevant International Standards	Extent of Alignment	State reason if MOD	Indicate whether requires: Safety (S), Environment (E) EMC, or combination
		Jig and Sabre Saw(upto60 mm)	MSIEC60745-1:2010 MSIEC60745-2-11:2011	✓ ✓	IEC60745-1:2006 IEC60745-2-11:2006	IDT IDT		
		Planer (up to 500W)	MSIEC60745-1:2011 MSIEC60745-2-14:2011	✓ ✓	IEC60745-1:2006 IEC60745-2-14:2006	IDT IDT		
		Trimmer (up to 300W) Hedge trimmer and Grass shears (up to 750W)	MSIEC60745-1:2010 MSIEC60745-2-15:2011	✓ ✓	IEC60745-1:2006 IEC60745-2-15:2006	IDT IDT		
		Router and trimmer (up to 500W)	MSIEC60745-1:2010 MSIEC60745-2-17:2012	✓ ✓	IEC60745-1:2006 IEC60745-2-17:2010	IDT IDT		
		High Pressure Cleaner	MSIEC60335-1:2015 IEC60335-2-79:2007	✓ ✓	IEC60335-1:2010 IEC60335-2-79:2005	IDT IDT		
		Sewing Machine	MSIEC60335-1:2015 MSIEC60335-2-28:2003	✓ ✓	IEC60335-1:2010 IEC60335-2-28:2002	IDT IDT		

Country	Total Product	Product type or grouping	STANDARDS					
			Domestic Standards	Please tick box if mandatory	Relevant International Standards	Extent of Alignment	State reason if MOD	Indicate whether requires: Safety (S), Environment (E) EMC, or combination
		Portable Heating Tool such as: Soldering Gun, Soldering Iron, Heat Gun, Hot Air Firelighters, Glue gun.	MSIEC60335-1:2015 MSIEC60335-2-45:2003	✓ ✓	IEC60335-1:2010 IEC60335-2-45:2002	IDT IDT		
	33	ADAPTOR/ CHARGER						
		Portable Battery Charger (up to 12V)	MSIEC60335-1:2015 MSIEC60335-2-29:2014	✓ ✓	IEC60335-1:2010 IEC60335-2-29:2010	IDT IDT		
		Adaptor for IT Equipment(up to20V)	MSIEC60950-1:2007	✓	IEC60950-1:2005 OR IEC 62368-1:2014	IDT		
		General electrical appliances Electronic Isolating Transformer	MSIEC61558-1:2005 MSIEC61558-2-6:2005	✓ ✓	IEC61558-1:1998 IEC61558-2-6:2009	IDT IDT		
		Switching mode power supply	MSIEC61558-1:2005 MSIEC61558-2-17:2007	✓ ✓	IEC61558-1:1998 IEC61558-2-17:1997 OR IEC 61558-2-16:2009	IDT		

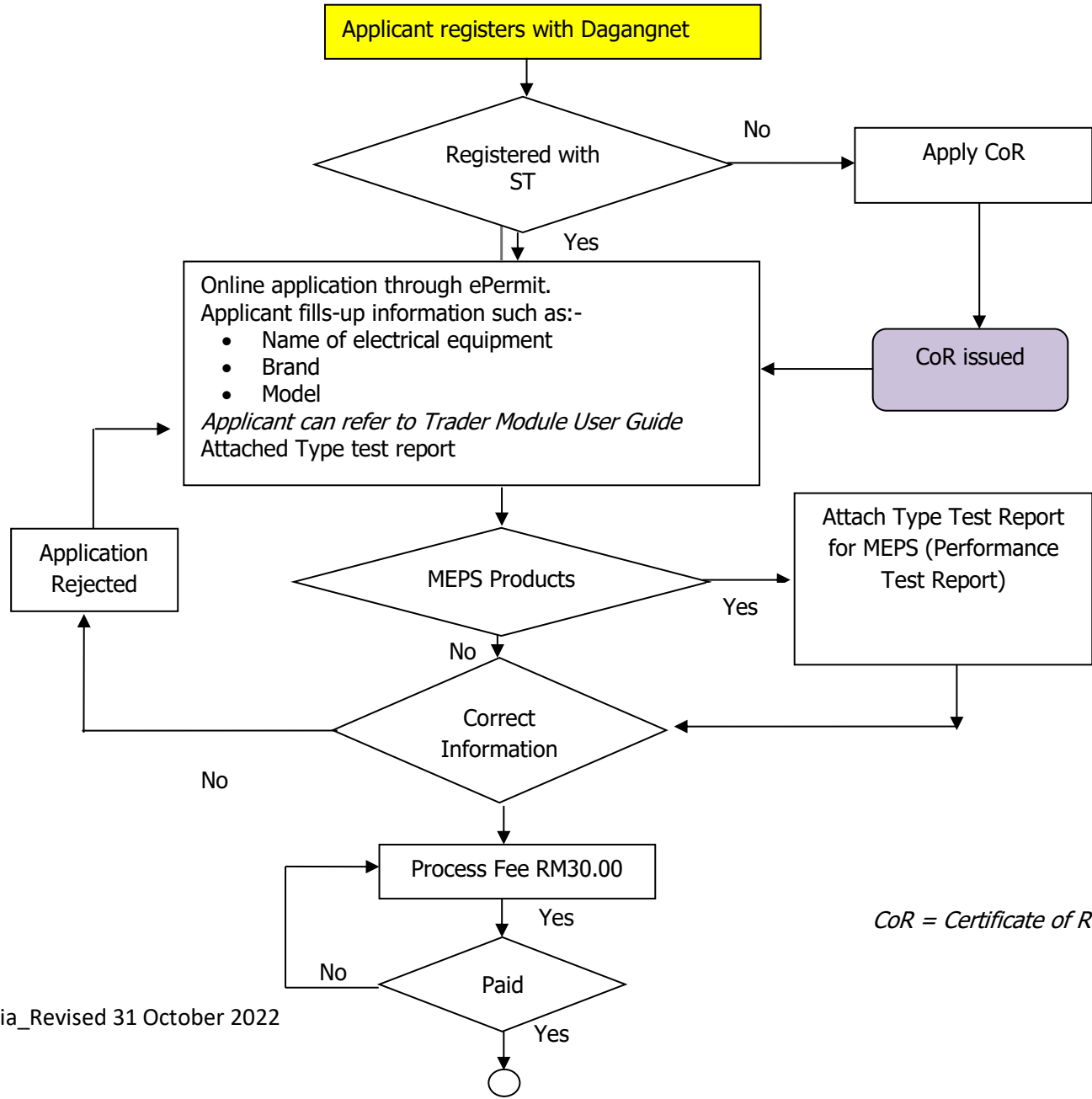
Country	Total Product	Product type or grouping	STANDARDS						
			Domestic Standards	Please tick box if mandatory	Relevant International Standards	Extent of Alignment	State reason if MOD	Indicate whether requires: Safety (S), Environment (E) EMC, or combination	
		Electric toys	MSIEC61558-1:2005 MSIEC61558-2-7:2007	✓ ✓	IEC61558-1:2009 IEC61558-2-7:2007	IDT			
		Audio video equipment	MSIEC60065:2007	✓ ✓	IEC60065:2005 OR IEC 62368-1:2014	IDT			
		IT & Office products	MSIEC60950-1:2007	✓	IEC60950-1:2005 OR IEC 62368-1:2014	IDT			
		Baby Cradle, Breast Pump, Electric Heated Pillow	MSIEC60335-1:2015	✓	IEC60335-1:2010	IDT IDT			
	34	WIRE/ CABLE/CORD(non-armoured)0.5mm² to 35mm²							
		Polyvinyl chloride(PVC) Insulated Flexible cord and cable	MS2112-5:2009,A1:2017	✓ ✓	BSEN50525-2-11:2011 or IEC60227-5:2011	NEQ	Minor differences in construction and test requirement for cable in Malaysia		

Country	Total Product	Product type or grouping	STANDARDS					
			Domestic Standards	Please tick box if mandatory	Relevant International Standards	Extent of Alignment	State reason if MOD	Indicate whether requires: Safety (S), Environment (E) EMC, or combination
		Rubber insulated cord and flexible cables	MS2127-4:2017	✓	BSEN50525-2-11:2011 IEC60245-1:2008 IEC60245-4:2011	NEQ	MS 140 is based on BS6500:1984	
		PVC-insulated cable (non-armoured) for electric power and supply: -non-sheathed	MS2112-3:2009,A1:2015	✓	IEC60227-3:1997	NEQ	Minor differences in construction and test requirement for cable in Malaysia	
		PVC-insulated cable (non-armoured) for electric power and supply: -sheathed	MS2112-4:2009,A1:2015	✓	IEC60227-4:1997	NEQ	Minor differences in construction and test requirement for cable in Malaysia	

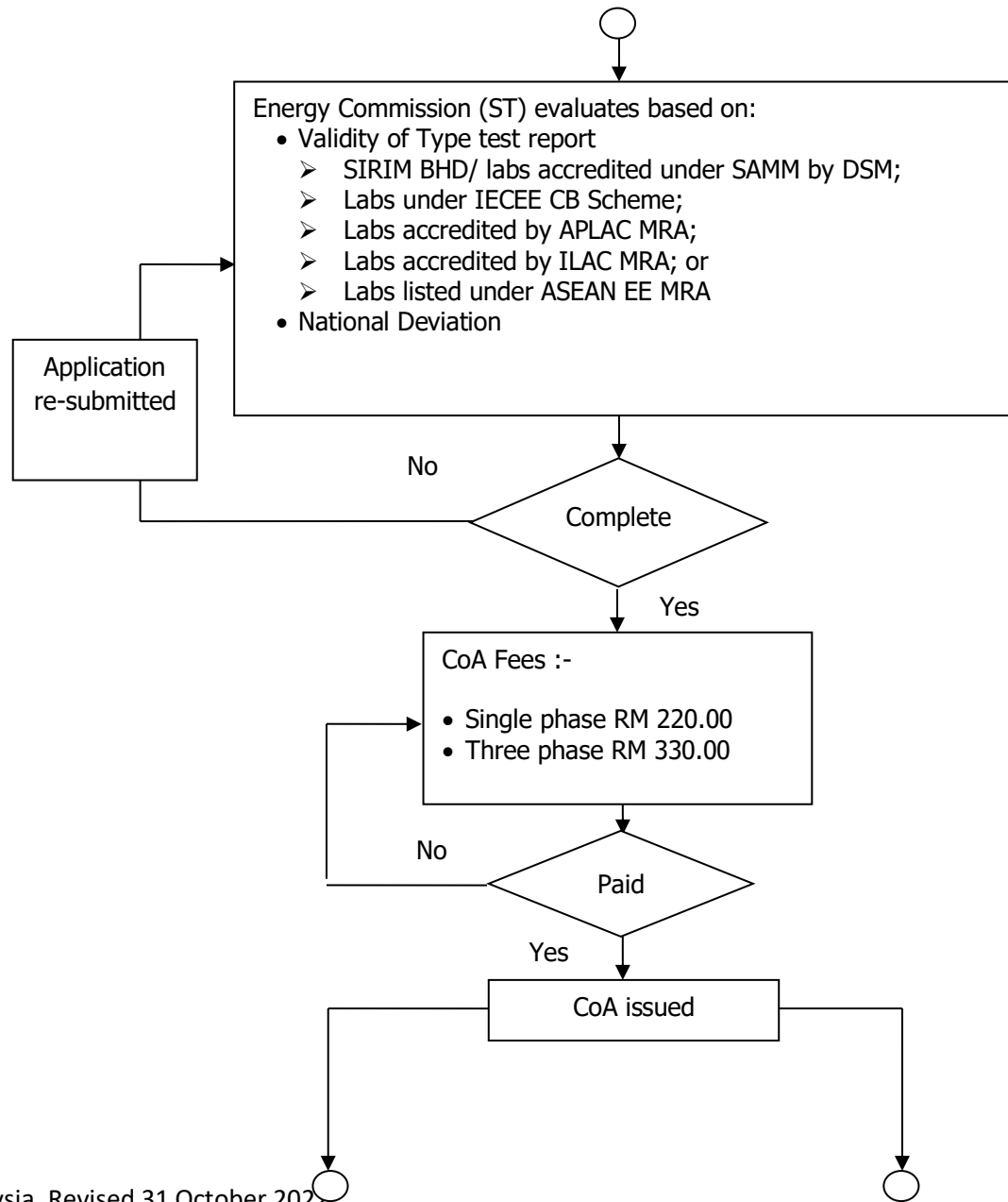
V. MODE OF REGULATION AND TYPES OF CONFORMITY ASSESSMENT REGIMES

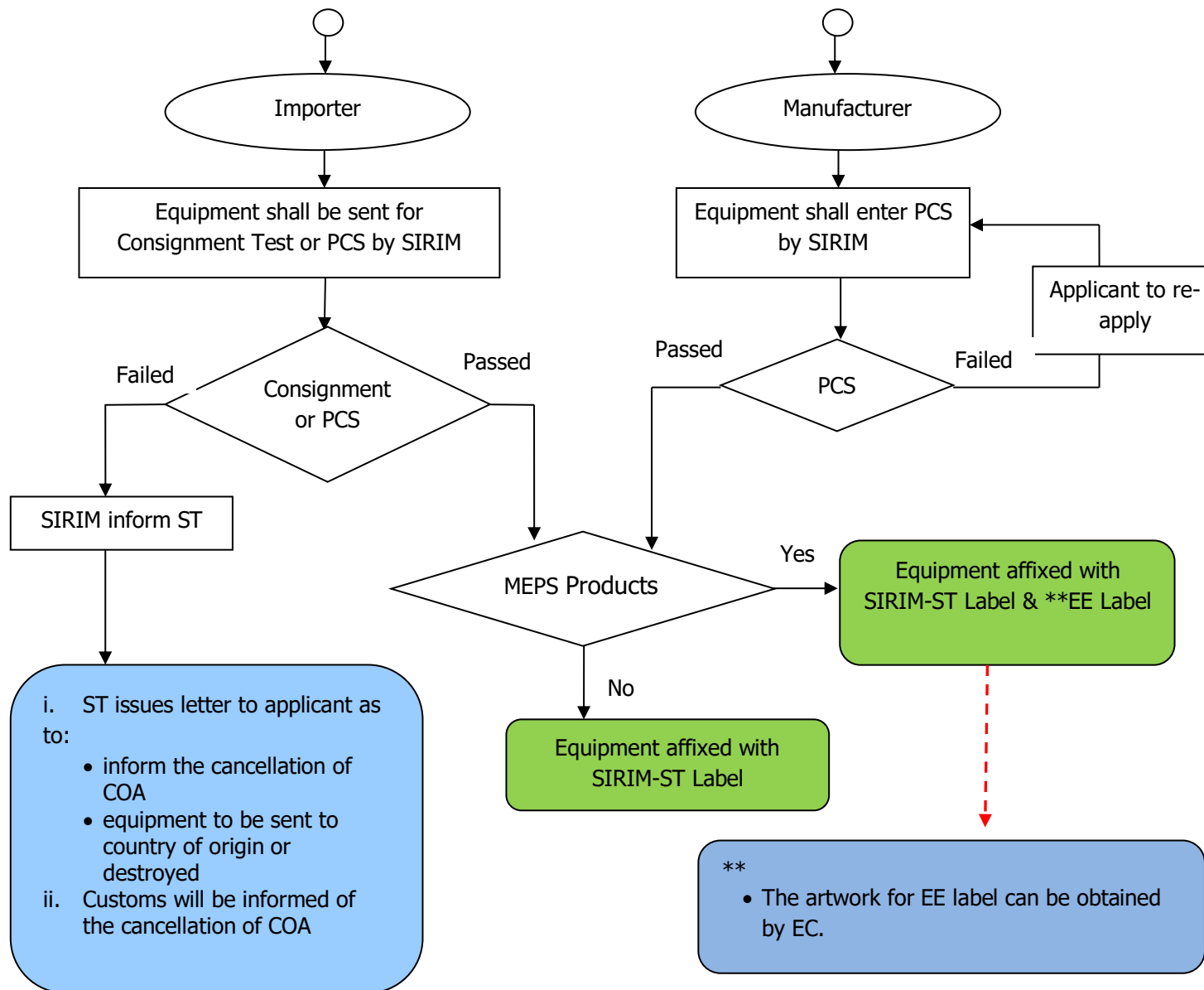
COUNTRY	TYPES OF CONFORMITY ASSESSMENT REGIMES	MODE OF REGULATION
Malaysia	Registration/ Certification	<p>A Certificate of Approval (CoA) is required. To obtain approval, the following are needed:</p> <ul style="list-style-type: none"> • Test reports from local or foreign laboratories which are acceptable to ST. • Certificate of Conformity (CoC) from local or foreign Conformity Assessment Bodies (CAB) which are acceptable to ST. • Electronic submission of CoA application via e-permit to ST. • Enter the SIRIM Product Certification Scheme/SIRIM Batch Testing Scheme (every consignment is subjected to inspection and testing) • Use of SIRIM-ST label.

VI. FLOW CHART OF MEMBER COUNTRIES' REGIME MALAYSIA



CoR = Certificate of Registration to Manufacture/Import





LIST OF REGULATED ELECTRICAL EQUIPMENT THAT ARE TO BE TESTED TO THE SPECIFIED MINIMUM ENERGY PERFORMANCE STANDARDS (MEPS)

No	Equipment	Type of Equipment	National Standard	International Standard	Efficiency Ratings																								
1.	Refrigerator	(a) one-door (b) two-door	MS IEC 62552-1:2016 MS IEC 62552-2:2016 MS IEC 62552-3:2016	IEC 62552-1:2015 IEC 62552-2:2015 IEC 62552-3:2015	<table border="1"> <thead> <tr> <th>Star Rating</th> <th>Star Index Value</th> </tr> </thead> <tbody> <tr> <td>5</td> <td>+ 25 % ≤ Star index</td> </tr> <tr> <td>4</td> <td>+ 10 % ≤ Star index < + 25 %</td> </tr> <tr> <td>3</td> <td>- 10 % ≤ Star index < + 10%</td> </tr> <tr> <td>2</td> <td>- 25 % ≤ Star index < - 10 %</td> </tr> <tr> <td>1</td> <td>- 35 % ≤ Star index < - 25 %</td> </tr> </tbody> </table> <p>Minimum Star Rating Value is 2.</p>	Star Rating	Star Index Value	5	+ 25 % ≤ Star index	4	+ 10 % ≤ Star index < + 25 %	3	- 10 % ≤ Star index < + 10%	2	- 25 % ≤ Star index < - 10 %	1	- 35 % ≤ Star index < - 25 %												
Star Rating	Star Index Value																												
5	+ 25 % ≤ Star index																												
4	+ 10 % ≤ Star index < + 25 %																												
3	- 10 % ≤ Star index < + 10%																												
2	- 25 % ≤ Star index < - 10 %																												
1	- 35 % ≤ Star index < - 25 %																												
2.	Air Conditioner	Single split wall mounted air conditioner with capacity up to 25,000 btu/hr	MS ISO 5151:2012 ISO 16358-1:2013 (Calculation Method)	ISO 5151:2010 ISO 16358-1:2013 (Calculation Method)	<p>Rated Cooling Capacity <4.5kW</p> <table border="1"> <thead> <tr> <th>Star Rating</th> <th>Tested CSPF (Wh/Wh)</th> </tr> </thead> <tbody> <tr> <td>5</td> <td>≥5.30</td> </tr> <tr> <td>4</td> <td>4.60 ≤CSPF <5.30</td> </tr> <tr> <td>3</td> <td>3.30 ≤CSPF <4.60</td> </tr> <tr> <td>2</td> <td>3.10 ≤ CSPF <3.30</td> </tr> <tr> <td>1</td> <td>< 3.10</td> </tr> </tbody> </table> <p>4.5kW ≤Rated Cooling Capacity ≤7.1kW</p> <table border="1"> <thead> <tr> <th>Star Rating</th> <th>Tested CSPF (Wh/Wh)</th> </tr> </thead> <tbody> <tr> <td>5</td> <td>≥5.10</td> </tr> <tr> <td>4</td> <td>4.00 ≤CSPF <5.10</td> </tr> <tr> <td>3</td> <td>3.10 ≤CSPF <4.00</td> </tr> <tr> <td>2</td> <td>2.90 ≤ CSPF <3.10</td> </tr> <tr> <td>1</td> <td>< 2.90</td> </tr> </tbody> </table> <p>Minimum Star Rating Value is 2.</p>	Star Rating	Tested CSPF (Wh/Wh)	5	≥5.30	4	4.60 ≤CSPF <5.30	3	3.30 ≤CSPF <4.60	2	3.10 ≤ CSPF <3.30	1	< 3.10	Star Rating	Tested CSPF (Wh/Wh)	5	≥5.10	4	4.00 ≤CSPF <5.10	3	3.10 ≤CSPF <4.00	2	2.90 ≤ CSPF <3.10	1	< 2.90
Star Rating	Tested CSPF (Wh/Wh)																												
5	≥5.30																												
4	4.60 ≤CSPF <5.30																												
3	3.30 ≤CSPF <4.60																												
2	3.10 ≤ CSPF <3.30																												
1	< 3.10																												
Star Rating	Tested CSPF (Wh/Wh)																												
5	≥5.10																												
4	4.00 ≤CSPF <5.10																												
3	3.10 ≤CSPF <4.00																												
2	2.90 ≤ CSPF <3.10																												
1	< 2.90																												

No	Equipment	Type of Equipment	National Standard	International Standard	Efficiency Ratings																								
3.	Television	For television size up to or equal to 70 inches and type of television are as following list: (a) Plasma (b) Liquid Crystal Display (LCD) (c) Light Emitting Diode (LED) (d) Cathode Ray Tube (CRT)	MS IEC 62301:2012 MS IEC 62087-3:2017	IEC 62301:2011 IEC 62087-3:2015	<table border="1"> <thead> <tr> <th>Star Rating</th> <th>Star Index Value</th> </tr> </thead> <tbody> <tr> <td>5</td> <td>+70% ≤ Star index</td> </tr> <tr> <td>4</td> <td>+25 % ≤ Star index < +70%</td> </tr> <tr> <td>3</td> <td>-22 % ≤ Star index < +25%</td> </tr> <tr> <td>2</td> <td>-55 % ≤ Star index < -22%</td> </tr> <tr> <td>1</td> <td>Star index < -55%</td> </tr> </tbody> </table> <p>Minimum Star Rating Value is 2.</p>	Star Rating	Star Index Value	5	+70% ≤ Star index	4	+25 % ≤ Star index < +70%	3	-22 % ≤ Star index < +25%	2	-55 % ≤ Star index < -22%	1	Star index < -55%												
Star Rating	Star Index Value																												
5	+70% ≤ Star index																												
4	+25 % ≤ Star index < +70%																												
3	-22 % ≤ Star index < +25%																												
2	-55 % ≤ Star index < -22%																												
1	Star index < -55%																												
4.	Domestic Fan	(a) Wall Fan ≤16 inch (b) Desk Fan ≤16 inch (c) Pedestal Fan ≤16 inch (d) Ceiling Fan ≤60 inch	MS 1220:2010	IEC 60879:1986 with modification	<p>For Wall fan, Desk fan and Pedestal fan</p> <table border="1"> <thead> <tr> <th>Star Rating</th> <th>COP (m³/min/W)</th> </tr> </thead> <tbody> <tr> <td>5</td> <td>≥1.20</td> </tr> <tr> <td>4</td> <td>1.12 to 1.19</td> </tr> <tr> <td>3</td> <td>1.08 to 1.11</td> </tr> <tr> <td>2</td> <td>1.01 to 1.07</td> </tr> <tr> <td>1</td> <td>0.93 to 1.00</td> </tr> </tbody> </table> <p>For Ceiling fan</p> <table border="1"> <thead> <tr> <th>Star Rating</th> <th>COP (m³/min/W)</th> </tr> </thead> <tbody> <tr> <td>5</td> <td>≥3.00</td> </tr> <tr> <td>4</td> <td>2.74 to 2.99</td> </tr> <tr> <td>3</td> <td>2.66 to 2.73</td> </tr> <tr> <td>2</td> <td>2.58 to 2.65</td> </tr> <tr> <td>1</td> <td>2.50 to 2.57</td> </tr> </tbody> </table> <p>Minimum Star Rating Value is 2.</p>	Star Rating	COP (m ³ /min/W)	5	≥1.20	4	1.12 to 1.19	3	1.08 to 1.11	2	1.01 to 1.07	1	0.93 to 1.00	Star Rating	COP (m ³ /min/W)	5	≥3.00	4	2.74 to 2.99	3	2.66 to 2.73	2	2.58 to 2.65	1	2.50 to 2.57
Star Rating	COP (m ³ /min/W)																												
5	≥1.20																												
4	1.12 to 1.19																												
3	1.08 to 1.11																												
2	1.01 to 1.07																												
1	0.93 to 1.00																												
Star Rating	COP (m ³ /min/W)																												
5	≥3.00																												
4	2.74 to 2.99																												
3	2.66 to 2.73																												
2	2.58 to 2.65																												
1	2.50 to 2.57																												

No	Equipment	Type of Equipment	National Standard	International Standard	Efficiency Ratings													
5.	Lighting	(a) T5 and T8 Double Capped Fluorescent Lamp	MS IEC 60081:2003	IEC 60081:2003	<table border="1"> <thead> <tr> <th>Type</th> <th>Lamp Rating (W)</th> <th>Minimum Efficacy (lm/W)</th> </tr> </thead> <tbody> <tr> <td rowspan="2">T8</td> <td>18 to 30</td> <td>70</td> </tr> <tr> <td>≥31</td> <td>80</td> </tr> <tr> <td rowspan="2">T5</td> <td>14</td> <td>75</td> </tr> <tr> <td>≥15</td> <td>80</td> </tr> </tbody> </table>	Type	Lamp Rating (W)	Minimum Efficacy (lm/W)	T8	18 to 30	70	≥31	80	T5	14	75	≥15	80
		Type	Lamp Rating (W)	Minimum Efficacy (lm/W)														
		T8	18 to 30	70														
			≥31	80														
		T5	14	75														
≥15	80																	
(b) Self ballasted single-capped lamps (Compact Fluorescent Lamps CFL)	MS IEC 60969:2006	IEC 60969:2001	<table border="1"> <thead> <tr> <th>Lamp Rating (W)</th> <th>Minimum Efficacy (lm/W)</th> </tr> </thead> <tbody> <tr> <td>< 9</td> <td>46</td> </tr> <tr> <td>9 to 14</td> <td>52</td> </tr> <tr> <td>15 to 24</td> <td>55</td> </tr> <tr> <td>≥25</td> <td>62</td> </tr> </tbody> </table>	Lamp Rating (W)	Minimum Efficacy (lm/W)	< 9	46	9 to 14	52	15 to 24	55	≥25	62					
Lamp Rating (W)	Minimum Efficacy (lm/W)																	
< 9	46																	
9 to 14	52																	
15 to 24	55																	
≥25	62																	
(c) Single-capped fluorescent lamps (Non-Integrated CFL) & circular fluorescent lamp	MS IEC 60901:2003	IEC 60901:1996	<table border="1"> <thead> <tr> <th>Lamp Rating (W)</th> <th>Minimum Efficacy (lm/W)</th> </tr> </thead> <tbody> <tr> <td>< 10</td> <td>46</td> </tr> <tr> <td>10 to 18</td> <td>55</td> </tr> <tr> <td>19 to 26</td> <td>59</td> </tr> <tr> <td>≥27</td> <td>70</td> </tr> </tbody> </table>	Lamp Rating (W)	Minimum Efficacy (lm/W)	< 10	46	10 to 18	55	19 to 26	59	≥27	70					
Lamp Rating (W)	Minimum Efficacy (lm/W)																	
< 10	46																	
10 to 18	55																	
19 to 26	59																	
≥27	70																	
(d) Self-ballasted Light Emitting Diode (LED) Lamps	MS IEC 62612:2015	IEC 62612:2013	<table border="1"> <thead> <tr> <th>Lamp Cap Type (As in MS IEC 60061-1)</th> <th>Minimum Efficacy (lm/W)</th> </tr> </thead> <tbody> <tr> <td>G13</td> <td>75</td> </tr> <tr> <td>GU10</td> <td>50</td> </tr> <tr> <td>E27 or B22d</td> <td>60</td> </tr> <tr> <td>E14</td> <td>60</td> </tr> </tbody> </table>	Lamp Cap Type (As in MS IEC 60061-1)	Minimum Efficacy (lm/W)	G13	75	GU10	50	E27 or B22d	60	E14	60					
Lamp Cap Type (As in MS IEC 60061-1)	Minimum Efficacy (lm/W)																	
G13	75																	
GU10	50																	
E27 or B22d	60																	
E14	60																	
(e) **Incandescent	MS IEC 60064:2006	IEC 60064:2006	Minimum Efficacy = 20 lm / W															

No	Equipment	Type of Equipment	National Standard	International Standard	Efficiency Ratings																								
		Lamps																											
6.	Washing Machine	a) Top Loading b) Front Loading	MS IEC 60456:2012	IEC 60456:2010	<p>a) Top loading ≤ 16kg</p> <table border="1"> <thead> <tr> <th>Star Rating</th> <th>Efficacy Ratio (Wh/kg)</th> </tr> </thead> <tbody> <tr> <td>5</td> <td><6.0</td> </tr> <tr> <td>4</td> <td>6.0 ≤ EER < 10.0</td> </tr> <tr> <td>3</td> <td>10.0 ≤ EER < 17.0</td> </tr> <tr> <td>2</td> <td>17.0 ≤ EER < 22.5</td> </tr> <tr> <td>1</td> <td>≥ 22.5</td> </tr> </tbody> </table> <p>b) Front loading ≤ 16kg</p> <table border="1"> <thead> <tr> <th>Star Rating</th> <th>Efficacy Ratio (Wh/kg)</th> </tr> </thead> <tbody> <tr> <td>5</td> <td><7.0</td> </tr> <tr> <td>4</td> <td>70.0 ≤ EER < 90.0</td> </tr> <tr> <td>3</td> <td>90.0 ≤ EER < 140.0</td> </tr> <tr> <td>2</td> <td>140.0 ≤ EER < 220.0</td> </tr> <tr> <td>1</td> <td>≥ 220.0</td> </tr> </tbody> </table> <p>Minimum Star Rating Value is 2</p>	Star Rating	Efficacy Ratio (Wh/kg)	5	<6.0	4	6.0 ≤ EER < 10.0	3	10.0 ≤ EER < 17.0	2	17.0 ≤ EER < 22.5	1	≥ 22.5	Star Rating	Efficacy Ratio (Wh/kg)	5	<7.0	4	70.0 ≤ EER < 90.0	3	90.0 ≤ EER < 140.0	2	140.0 ≤ EER < 220.0	1	≥ 220.0
Star Rating	Efficacy Ratio (Wh/kg)																												
5	<6.0																												
4	6.0 ≤ EER < 10.0																												
3	10.0 ≤ EER < 17.0																												
2	17.0 ≤ EER < 22.5																												
1	≥ 22.5																												
Star Rating	Efficacy Ratio (Wh/kg)																												
5	<7.0																												
4	70.0 ≤ EER < 90.0																												
3	90.0 ≤ EER < 140.0																												
2	140.0 ≤ EER < 220.0																												
1	≥ 220.0																												

No	Equipment	Type of Equipment	National Standard	International Standard	Efficiency Ratings												
7.	Microwave Oven	Microwave Oven with size up to or equal to 32 litre	MS IEC 62301:2012	IEC 62301:2011 and IEC 60705:2010	<table border="1"> <thead> <tr> <th>Star Rating</th> <th>η</th> </tr> </thead> <tbody> <tr> <td>5</td> <td>$65\% \leq \eta$</td> </tr> <tr> <td>4</td> <td>$58\% \leq \eta < 65\%$</td> </tr> <tr> <td>3</td> <td>$53\% \leq \eta < 58\%$</td> </tr> <tr> <td>2</td> <td>$45\% \leq \eta < 53\%$</td> </tr> <tr> <td>1</td> <td>$\eta < 45\%$</td> </tr> </tbody> </table> <p>Minimum star rating value is 2</p>	Star Rating	η	5	$65\% \leq \eta$	4	$58\% \leq \eta < 65\%$	3	$53\% \leq \eta < 58\%$	2	$45\% \leq \eta < 53\%$	1	$\eta < 45\%$
Star Rating	η																
5	$65\% \leq \eta$																
4	$58\% \leq \eta < 65\%$																
3	$53\% \leq \eta < 58\%$																
2	$45\% \leq \eta < 53\%$																
1	$\eta < 45\%$																

No	Equipment	Type of Equipment	National Standard	International Standard	Efficiency Ratings																																									
8	Rice Cooker	(a) Capacity: 1.0L ≤ Capacity ≤ 3.6L; and (b) Rated Power: 400W ≤ P ≤ 1600W	MS 2024:2020	N/A	<table border="1"> <thead> <tr> <th rowspan="2">Rated power, P (W)</th> <th colspan="5">Efficiency, η (%)</th> </tr> <tr> <th>1</th> <th>2</th> <th>3</th> <th>4</th> <th>5</th> </tr> </thead> <tbody> <tr> <td>P ≤ 400</td> <td>≥ 65</td> <td>≥ 70</td> <td>≥ 75</td> <td>≥ 80</td> <td>≥ 85</td> </tr> <tr> <td>400 < P ≤ 600</td> <td>≥ 66</td> <td>≥ 71</td> <td>≥ 76</td> <td>≥ 81</td> <td>≥ 87</td> </tr> <tr> <td>600 < P ≤ 800</td> <td>≥ 67</td> <td>≥ 72</td> <td>≥ 77</td> <td>≥ 82</td> <td>≥ 89</td> </tr> <tr> <td>800 < P ≤ 1000</td> <td>≥ 68</td> <td>≥ 73</td> <td>≥ 78</td> <td>≥ 83</td> <td>≥ 91</td> </tr> <tr> <td>1000 < P ≤ 2000</td> <td>≥ 69</td> <td>≥ 74</td> <td>≥ 79</td> <td>≥ 84</td> <td>≥ 93</td> </tr> </tbody> </table> <p>Minimum star rating value is 2</p>	Rated power, P (W)	Efficiency, η (%)					1	2	3	4	5	P ≤ 400	≥ 65	≥ 70	≥ 75	≥ 80	≥ 85	400 < P ≤ 600	≥ 66	≥ 71	≥ 76	≥ 81	≥ 87	600 < P ≤ 800	≥ 67	≥ 72	≥ 77	≥ 82	≥ 89	800 < P ≤ 1000	≥ 68	≥ 73	≥ 78	≥ 83	≥ 91	1000 < P ≤ 2000	≥ 69	≥ 74	≥ 79	≥ 84	≥ 93
Rated power, P (W)	Efficiency, η (%)																																													
	1	2	3	4	5																																									
P ≤ 400	≥ 65	≥ 70	≥ 75	≥ 80	≥ 85																																									
400 < P ≤ 600	≥ 66	≥ 71	≥ 76	≥ 81	≥ 87																																									
600 < P ≤ 800	≥ 67	≥ 72	≥ 77	≥ 82	≥ 89																																									
800 < P ≤ 1000	≥ 68	≥ 73	≥ 78	≥ 83	≥ 91																																									
1000 < P ≤ 2000	≥ 69	≥ 74	≥ 79	≥ 84	≥ 93																																									

No	Equipment	Type of Equipment	National Standard	International Standard	Efficiency Ratings												
9	Freezer	freezer with size up to or equal to 320 L (with size up to 320L and below (\leq 320L): (a) chest with solid door.	N/A	IEC 62552-1:2015/AMD1:2020 and IEC 62552-3:2015/AMD1:2020	<table border="1"> <thead> <tr> <th>Star rating</th> <th>Star index value</th> </tr> </thead> <tbody> <tr> <td>5</td> <td>+ 35 % \leq Star index</td> </tr> <tr> <td>4</td> <td>+ 15 % \leq Star index < + 35 %</td> </tr> <tr> <td>3</td> <td>- 20 % \leq Star index < + 15 %</td> </tr> <tr> <td>2</td> <td>- 37 % \leq Star index < - 20 %</td> </tr> <tr> <td>1</td> <td>Star index < - 37 %</td> </tr> </tbody> </table>	Star rating	Star index value	5	+ 35 % \leq Star index	4	+ 15 % \leq Star index < + 35 %	3	- 20 % \leq Star index < + 15 %	2	- 37 % \leq Star index < - 20 %	1	Star index < - 37 %
Star rating	Star index value																
5	+ 35 % \leq Star index																
4	+ 15 % \leq Star index < + 35 %																
3	- 20 % \leq Star index < + 15 %																
2	- 37 % \leq Star index < - 20 %																
1	Star index < - 37 %																

-MEPS for Microwave Oven is effective on 1st March 2021.

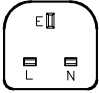
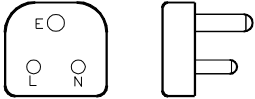
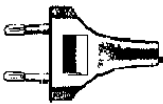


-MEPS for Rice Cooker is effective on 1st April 2021.

-MEPS for Freezer is effective on 1st March 2022.

**The Minimum Energy Performance Standards (MEPS) value for incandescent lamp shall not apply for the following use:

- (a) components in electrical appliances;
- (b) medical and lab equipment;
- (c) internal decoration, shows and exhibition;
- (d) safety and signaling;
- (e) conservation of animals and as repellent for insects;
- (f) heating and testing;
- (g) cleanliness and health;
- (h) beauty treatment;
- (i) lamps that cannot be directly replaced with other type of lamp; and
- (j) incandescent lamp for other purposes deemed suitable by the Commission to be excluded.

VII. MAINS VOLTAGE, FREQUENCY AND MAINS PLUG CONFIGURATION

Country	Mains Voltage and Tolerance	Mains Frequency and Tolerance	Applicable Legislation	Mains Plug Configuration				
				Domestic Standard	Please tick box if mandatory	Relevant International Standard	Extent of Alignment-	Diagram of Mains Plug Configuration-
Malaysia	230 Volts single phase tolerance +10%-6%	50Hz ±1%	-	MS589:PT.1: 2011&MS589 : PT .2 :2011for 3-pin rectangular type 13-Amp plug	✓	BS 1363: PT. 1: 1995 &BS 1363: PT.2: 1995 for 3 pin rectangular type 13-Amp plug	-	  <p>13A FUSED PLUG 15A PLUG</p>
	400 Volts Three phase tolerance +10%-6%	50 Hz ±1%	-	MS 1577:2003 for round type 15-Amp plug MS 1578:2003 for 2 pole plug with supply cord (max2.5A)	✓ ✓	BSEN 50075:1991	-	   <p>2pole plug</p>

VIII. OTHER INFORMATION

CUSTOMS (PROHIBITION OF IMPORTS) (AMENDMENT)(NO. 7) ORDER 2017

JADUAL PERTAMA/FIRST SCHEDULE
(Goods the import of which is absolutely prohibited)

(1) <i>Item No.</i>	(2) <i>Description of goods</i>	<i>Section/Chapter/Heading/ Subheading</i>	AHTN 2012	AHTN 2017	(3) <i>Country</i>	<i>Ministry/ Department/ Statutory Body (For Reference only)</i>
14	Liquid-filled type electric heating bag, cushion, pillow, pouch or pad using alternating current (AC) or AC and direct current (AC/DC) as follows: (i) with 2-pin inlet filled with liquid; or (ii) with 2-pin or 3-pin inlet without liquid (empty)	8516.79 900, 9404.90 000	8516.79.90 00, 9404.90.90 00		All countries	ST

CUSTOMS (PROHIBITION OF IMPORTS) (AMENDMENT)(NO. 7) ORDER 2017

JADUAL KEEMPAT/FOURTH SCHEDULE

BAHAGIAN II/PART II

(Goods which may not be imported into Malaysia except conforming to the Malaysian Standard and/or other standards approved by the Malaysian Authorities and in the manner provided and does not apply to the free commercial zones)

(1)	(2)	(3)			(4)	(5)
Item No.	Description of Goods	Chapter/ Heading/ Subheading HS2012 (9 digit)	HS2012 (10 digit)	HS2017 (10 digit)	Country	Manner of Import
13.	Liquid-filled type electric heating bag, cushion, pillow, pouch or pad filled with liquid, using 3-pin inlet alternating current (AC) or AC and direct current (AC/DC)	8516.79 900, 9404.90 000	8516.79.90 00, 9404.90.90 00			That the import is accompanied by a letter of approval issued by the Suruhanjaya Tenaga in the case of Peninsular Malaysia and Sabah, or the equivalent counterpart in the case of Sarawak, certifying that the specified domestic electrical apparatus conforms to the Malaysian Standard or International Electrotechnical Commission (IEC) standard

IX. CONTACT PERSON

Country	Contact Person and Address	
MALAYSIA	<p>Ir. Md Zakuan bin Hj. Ibrahim Director, Safety Regulatory Department, Energy Commission No.12, Jalan Tun Hussein Onn, Presint2 62100 Putrajaya. Contact no:(603) 8870 8563 Fax no: (603) 8888 8652 Email: zakuan@st.gov.my Website: http://www.st.gov.my</p>	<p>Shaiful Rizal Bin Mazlan Deputy Director, Electrical Equipment Unit, Safety Regulatory Department, Energy Commission No.12, Jalan Tun Hussein Onn, Presint2 62100 Putrajaya. Contact no:(603) 8870 8678 Fax no: (603) 8888 8652 Email: shaiful@st.gov.my Website: http://www.st.gov.my</p>